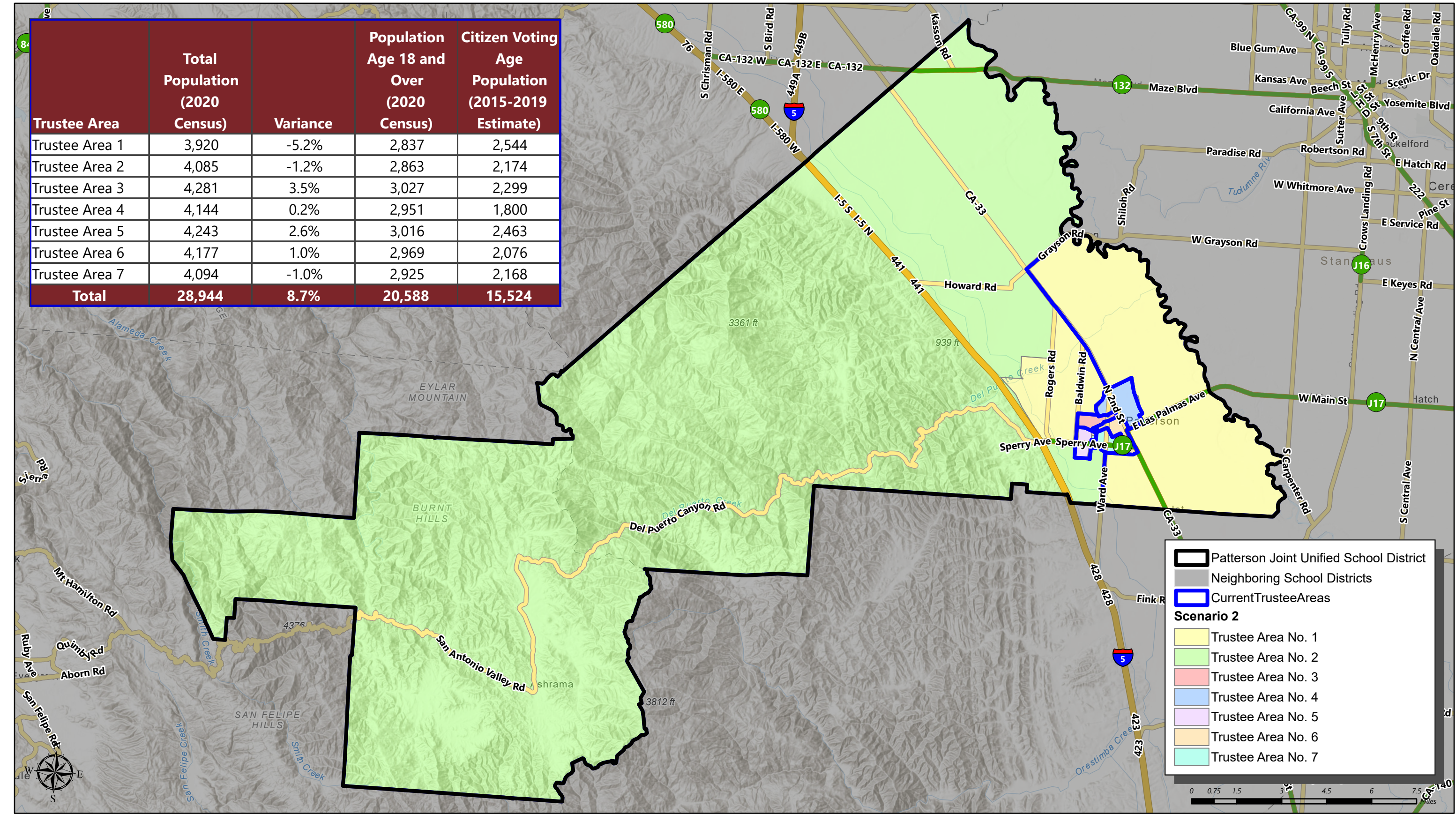
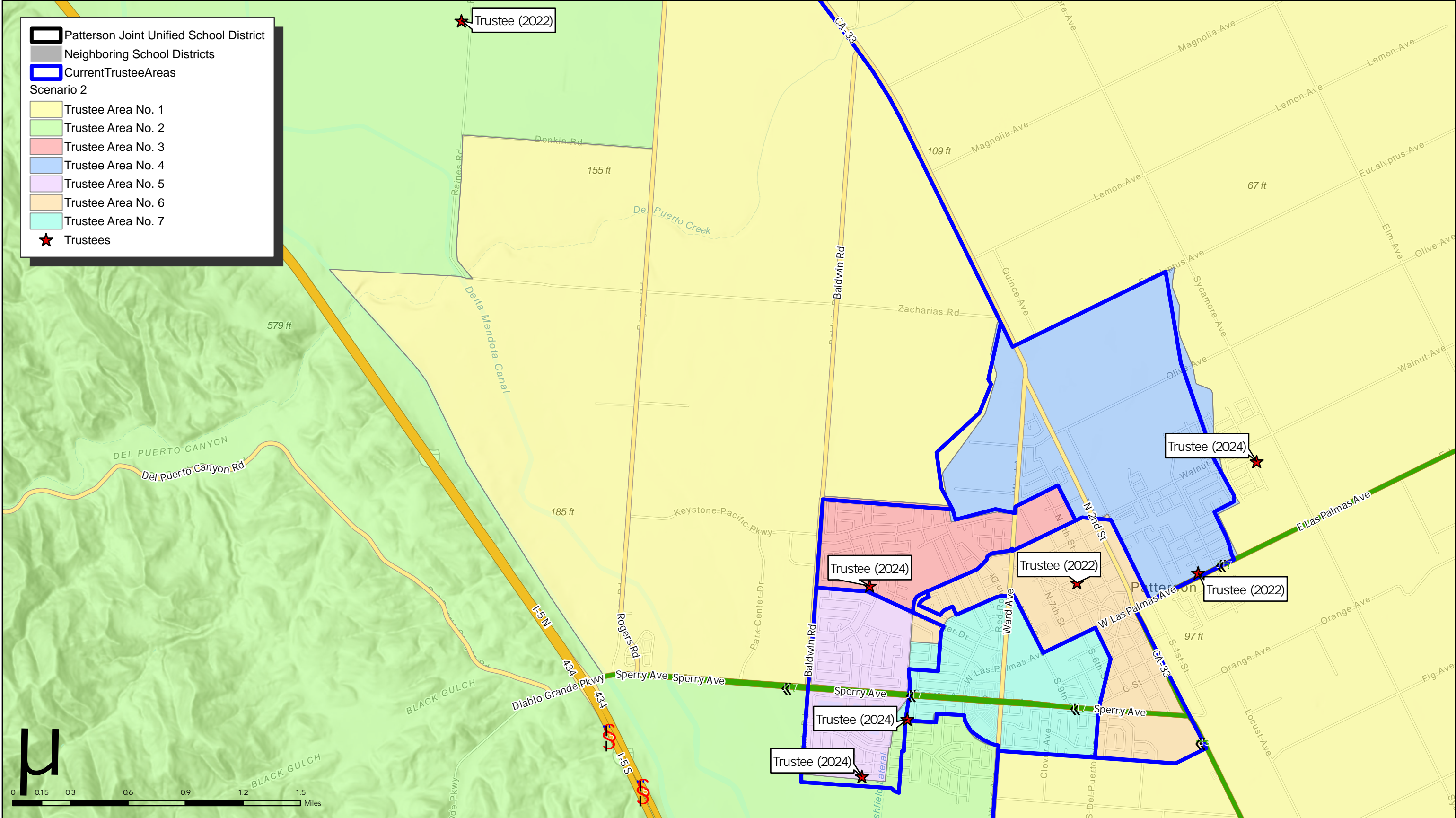


Trustee Area	Total Population (2020 Census)	Variance	Population Age 18 and Over (2020 Census)	Citizen Voting Age Population (2015-2019 Estimate)
Trustee Area 1	3,920	-5.2%	2,837	2,544
Trustee Area 2	4,085	-1.2%	2,863	2,174
Trustee Area 3	4,281	3.5%	3,027	2,299
Trustee Area 4	4,144	0.2%	2,951	1,800
Trustee Area 5	4,243	2.6%	3,016	2,463
Trustee Area 6	4,177	1.0%	2,969	2,076
Trustee Area 7	4,094	-1.0%	2,925	2,168
Total	28,944	8.7%	20,588	15,524



PATTERSON JOINT UNIFIED SCHOOL DISTRICT

CONCEPTUAL TRUSTEE AREAS - SCENARIO 2



PATTERSON JOINT UNIFIED SCHOOL DISTRICT

CONCEPTUAL TRUSTEE AREAS - SCENARIO 2

Total Population:	28,944	Ideal Population:	4,135	Variance:	8.7%
-------------------	--------	-------------------	-------	-----------	------

Total Population (2020 Census)							
	Trustee Area 1	Trustee Area 2	Trustee Area 3	Trustee Area 4	Trustee Area 5	Trustee Area 6	Trustee Area 7
Population	3,920	4,085	4,281	4,144	4,243	4,177	4,094
Population Variance	-215	-50	146	9	108	42	-41
	-5.2%	-1.2%	3.5%	0.2%	2.6%	1.0%	-1.0%
Hispanic/Latino	60.6%	65.3%	56.5%	80.3%	46.9%	69.8%	65.0%
White	30.1%	19.5%	19.2%	13.4%	19.8%	19.8%	21.0%
Black/ African American	1.6%	5.9%	8.9%	1.1%	13.3%	4.0%	4.5%
American Indian/ Alaska Native	0.3%	0.3%	0.3%	0.4%	0.3%	0.5%	0.4%
Asian	3.6%	4.8%	9.8%	1.7%	11.6%	2.1%	4.4%
Native Hawaiian/ Other Pacific Islander	0.4%	0.9%	1.4%	0.4%	2.9%	0.6%	1.1%
Other	0.6%	0.4%	0.7%	0.4%	0.6%	0.5%	0.5%
Two or More Races	2.8%	2.9%	3.3%	2.3%	4.7%	2.7%	3.1%

Population 18 and Over (2020 Census)							
	Trustee Area 1	Trustee Area 2	Trustee Area 3	Trustee Area 4	Trustee Area 5	Trustee Area 6	Trustee Area 7
Population	2,837	2,863	3,027	2,951	3,016	2,969	2,925
Hispanic/Latino	56.4%	60.7%	53.2%	77.7%	43.7%	67.1%	61.5%
White	34.5%	22.7%	21.7%	15.9%	21.8%	22.7%	23.8%
Black/ African American	1.4%	6.1%	9.7%	1.4%	14.0%	4.2%	4.5%
American Indian/ Alaska Native	0.4%	0.4%	0.3%	0.4%	0.1%	0.7%	0.5%
Asian	3.6%	5.8%	10.8%	1.7%	13.2%	2.2%	4.9%
Native Hawaiian/ Other Pacific Islander	0.3%	0.7%	1.3%	0.5%	2.8%	0.6%	1.2%
Other	0.3%	0.4%	0.6%	0.3%	0.6%	0.3%	0.5%
Two or More Races	3.0%	3.1%	2.4%	2.1%	3.9%	2.3%	3.2%

Citizens by Voting Age Population Estimate (2015-2019)							
	Trustee Area 1	Trustee Area 2	Trustee Area 3	Trustee Area 4	Trustee Area 5	Trustee Area 6	Trustee Area 7
Population	2,544	2,174	2,299	1,800	2,463	2,076	2,168
Hispanic/Latino	46.3%	60.7%	42.6%	70.9%	38.0%	59.1%	58.1%
White	45.9%	28.0%	25.4%	22.9%	22.5%	32.6%	26.8%
Black/ African American	7.4%	2.7%	17.0%	3.2%	15.7%	5.2%	4.8%
American Indian/ Alaska Native	0.0%	0.0%	0.0%	0.5%	0.0%	0.4%	0.0%
Asian	0.2%	6.6%	9.4%	0.0%	12.3%	1.2%	5.1%
Native Hawaiian/ Other Pacific Islander	0.0%	0.0%	3.3%	0.2%	5.9%	0.2%	2.9%
Other	N/A	N/A	N/A	N/A	N/A	N/A	N/A
Two or More Races	0.1%	2.0%	2.3%	2.2%	5.6%	1.4%	2.3%